



# TFM 09

## TFM 09 (Trickling Fill Media – 09 mm)

is a structured fill media obtained by the assembly of PVC thermoformed sheets.

### Design

The thermoformed profile is 9 mm in height.

The sheets have a crossed type design, with 60° inclined flutes with respect to the horizon, which present an inlet section of 18 mm (9 + 9 mm).

The PVC thermoformed sheets can be made of different thicknesses in order to adapt the block mechanical characteristics to the specific application needs.

### Principal applications:

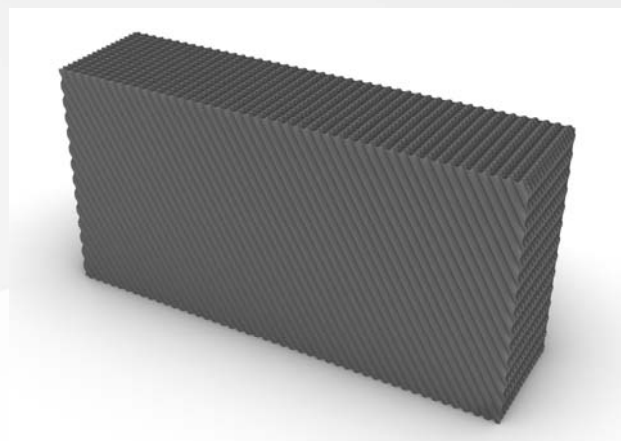
The TFM 09 honeycomb structure and its high specific surface allow this product to find a wide use in many applications among with:

- ❖ Fill media for wastewater treatment, such as trickling filters and compact systems
- ❖ Coalescing media for the oil and hydrocarbons separation
- ❖ Fill media for evaporative cooling towers
- ❖ Fill media for gases and fumes abatement columns , like wet scrubbers and stripping columns
- ❖ Panel filters used for the interception of drops or wet dusts, a san instance in painting cabins and ornamental stones working stations.

### PVC Characteristics:

The PVC used to make this fill media comply with the most restrictive standards, such as the CTI rule 136 and the ASTM E-84, presenting many advantages:

- ❖ Lightness, which allows an easy handling;
- ❖ Self-extinguishing and fire resistant (ASTM E-84);
- ❖ High mechanical resistance, in particular to compression;
- ❖ Resistance to the majority of chemicals and to the biological aggression;
- ❖ It is an hydrophilic material, this is why water forms a well distributed liquid film while flowing on it.



### Temperature d'esercizio

Standard	Alta Temperatura	Bassa Temperatura
-5°C ÷ 60°C	-5°C ÷ 75°C	- 40°C ÷ 60°C



### Available Sizes

Sheets sizes depend on the mould size and from the possibilities given by our thermoforming machines.

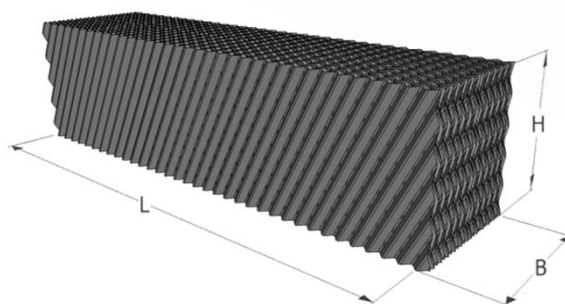
On request we can supply cut to size blocks.

TFM 09 can be supplied both in pre-assembled blocks and sheets to be assembled on site.

The latter option allow to optimize the freight volume and consequently to reduce the transport costs.

The assembly process can be chemical, using a solvent glue, which doesn't leave any residual in the finished product, or thermal, by welding.

Refill-tech can supply the suitable machines to make these operations.



#### Standard Block Sizes: L x B x H

1200 x 300 x 300 mm	1200 x 600 x 300 mm
1200 x 300 x 600 mm	1200 x 600 x 600 mm

#### Standard Sheet Sizes: L x H

1200 x 300 mm	1200 x 600 mm
---------------	---------------

Specific Surface	Thermoformed Profile Height	Standard Sheet Thickness	Void Index	Material
355 m <sup>2</sup> /m <sup>3</sup>	9 mm	250 micron	97 %	PVC