

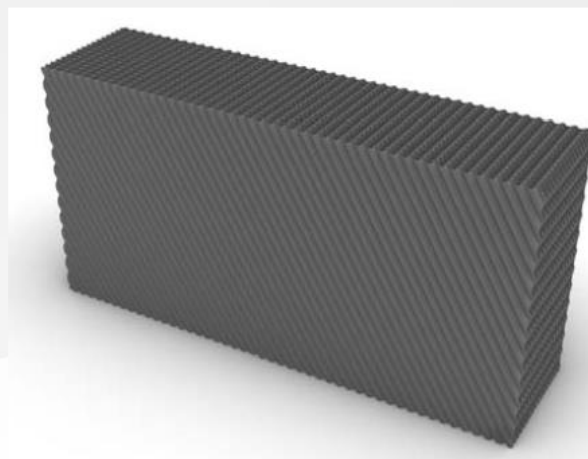


# FMC 09

**FMC 09 (Fill Media - Crossed type – 9 mm)** is a structured fill media obtained by the assembly of PVC thermoformed sheets.

### Design:

The thermoformed profile is 9 mm height. The sheets have a crossed type design, with 60° inclined flutes, which present an inlet section of 18 mm (9 + 9 mm).



The PVC thermoformed sheets can be made of different thickness in order to adapt the block mechanical characteristics to the specific application needs.

### Main applications

The FMC 09 honeycomb structure and its high specific surface allow this product to find a wide use in many applications including:

- ❖ Panel filters used for the interception of drops or wet dusts, as instance in painting cabins and in marble and ornamental stones working stations
- ❖ Fill media for gases and fumes abatement columns, like wet scrubbers and stripping columns
- ❖ Fill media for wastewater treatment, such as trickling filters and compact systems
- ❖ Coalescing media for oil and hydrocarbons separation

### PVC characteristics

The PVC used to make this fill media comply with the most restrictive standards, such as the CTI rule 136 and the ASTM E-84, presenting many advantages:

- ❖ Lightness, which allows an easy handling;
- ❖ Self-extinguishing and fire resistant (ASTM E-84);
- ❖ High mechanical resistance, in particular to compression;
- ❖ Resistance to the majority of chemicals and to the biological aggression;
- ❖ It is an hydrophilic material, this is why water forms a well distributed liquid film while flowing on it.

### Working Temperature

Standard	High Temperature	Low Temperature
-5°C ÷ 60°C	-5°C ÷ 75°C	- 40°C ÷ 60°C



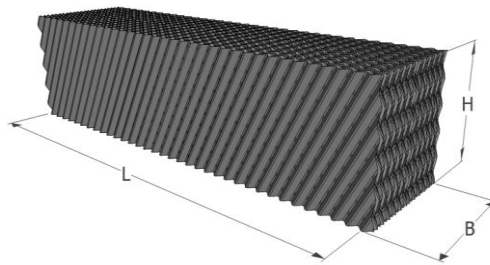
### Available sizes

Sheets sizes depend on the mould size and from the possibilities given by our thermoforming machines. On request we can supply cut to size blocks.

FMC 09 can be supplied both in pre-assembled blocks and sheets to be assembled on site. The latter option allows to optimize the freight volume and consequently to reduce the transport costs.

The assembly process can be chemical, using a solvent glue, which does not leave any residual in the finished product, or thermal, by welding.

Refill-Tech can supply the suitable machines to make these operations.



#### Standard Block Sizes: L x B x H

1200 x 300 x 300 mm	1200 x 600 x 300 mm
1200 x 300 x 600 mm	1200 x 600 x 600 mm

#### Standard Sheet Sizes: L x H

1200 x 300 mm	1200 x 600 mm
---------------	---------------

Specific Surface	Thermoformed Profile Height	Standard Sheet Thickness	Void Index	Material
355 m <sup>2</sup> /m <sup>3</sup>	9 mm	250 micron	97 %	PVC